

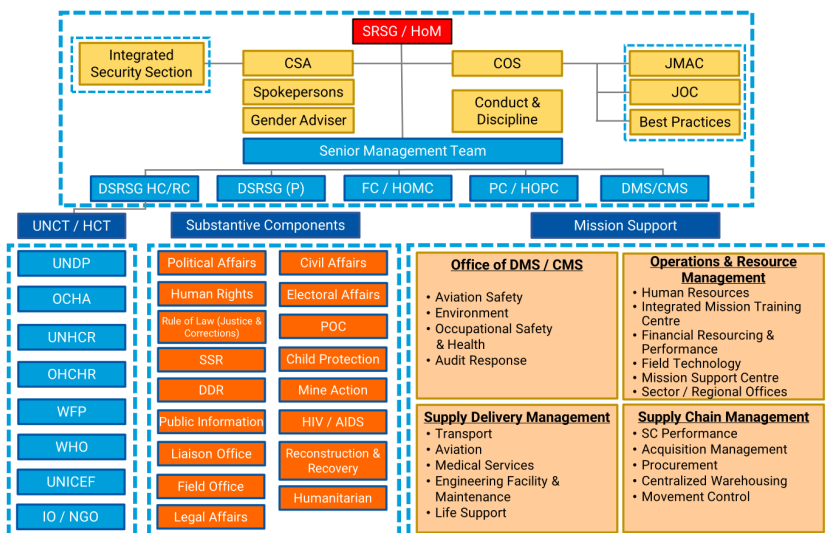


# Lesson 1.5

## Integrated Mission Structures



# Content



- Integrated Mission HQ Generic Structure
- Integrated Mission Elements
- Key Integrated Functions

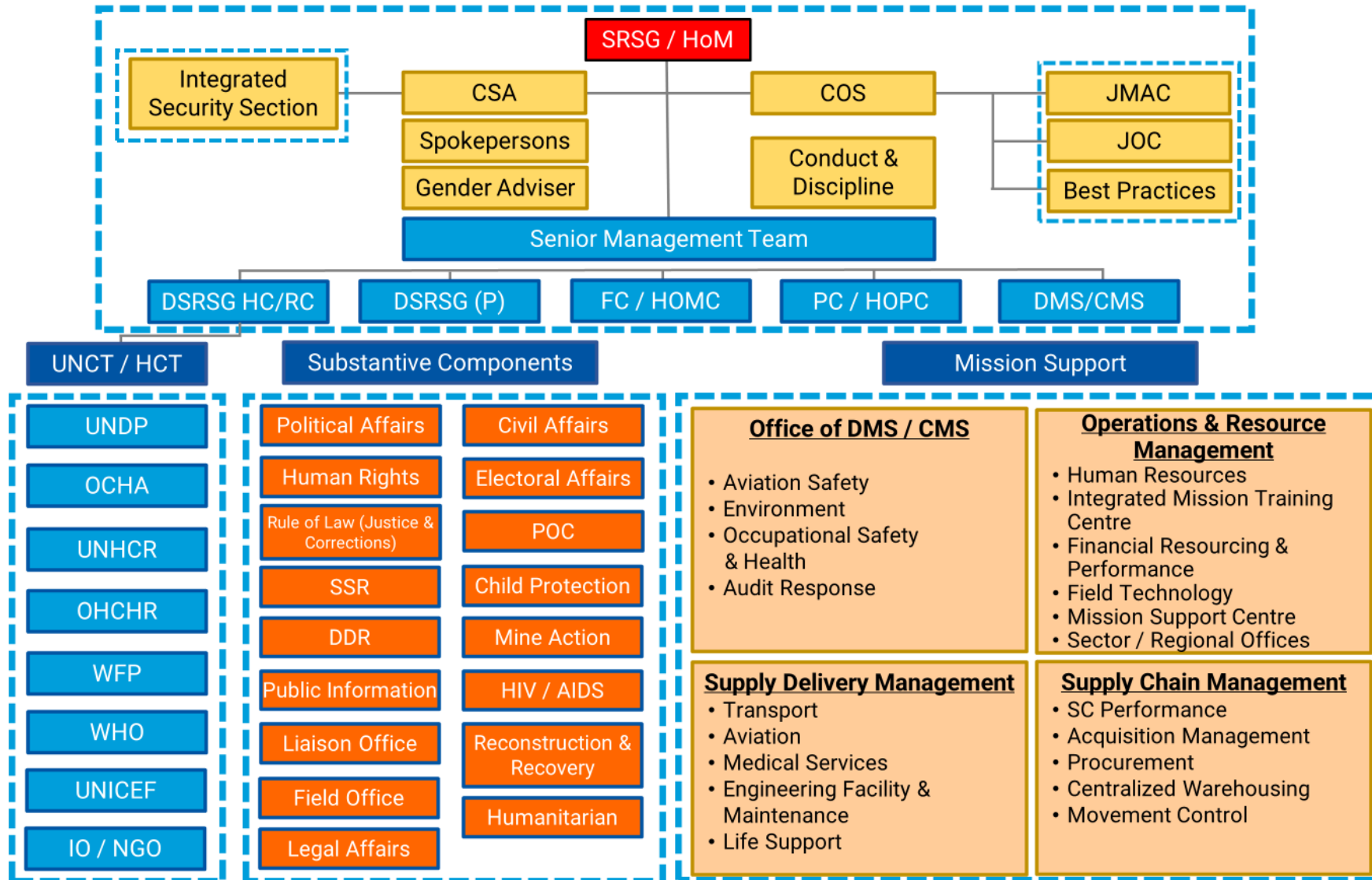
# Learning Outcomes

---

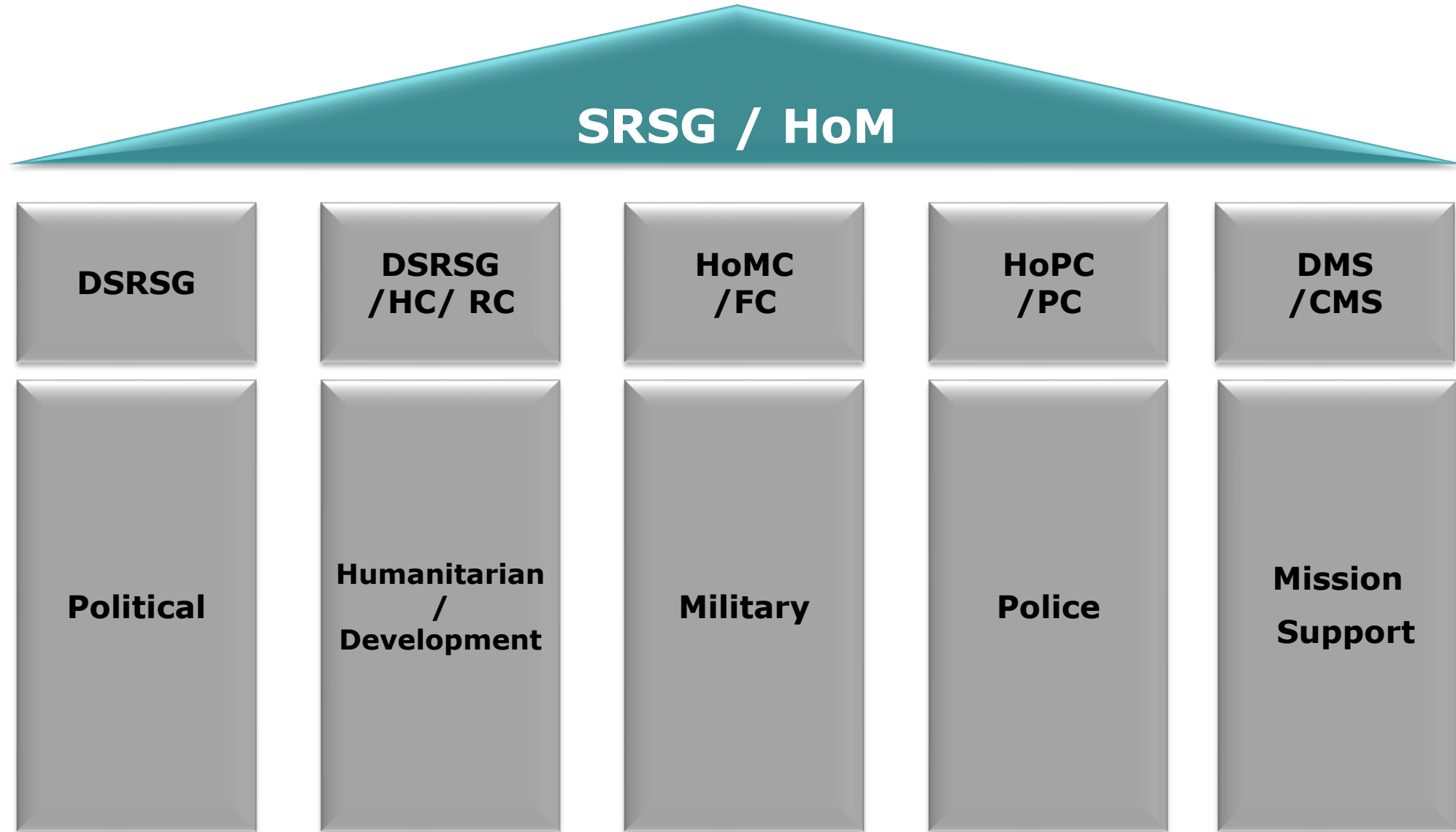


- Describe the structure of an integrated mission
- Describe the entities where MSOs are likely to be present and understand their roles

# Integrated Mission HQ (Generic Structure)



# Integrated Mission HQ (Generic Structure)



# Head of Mission (HOM/SRSG)



- Represents the SG and speaks on behalf of the UN in the mission area
- Has overall authority over the activities of the UN in the mission
- Responsible for implementing the UN Mission Plan and developing strategies to achieve those goals
- Directs, in consultation with MLT, the use of mission resources in the most effective manner
- Leads and directs the heads of all mission components and ensures unity of effort and coherence among all UN entities

# Mission Chief of Staff (COS)

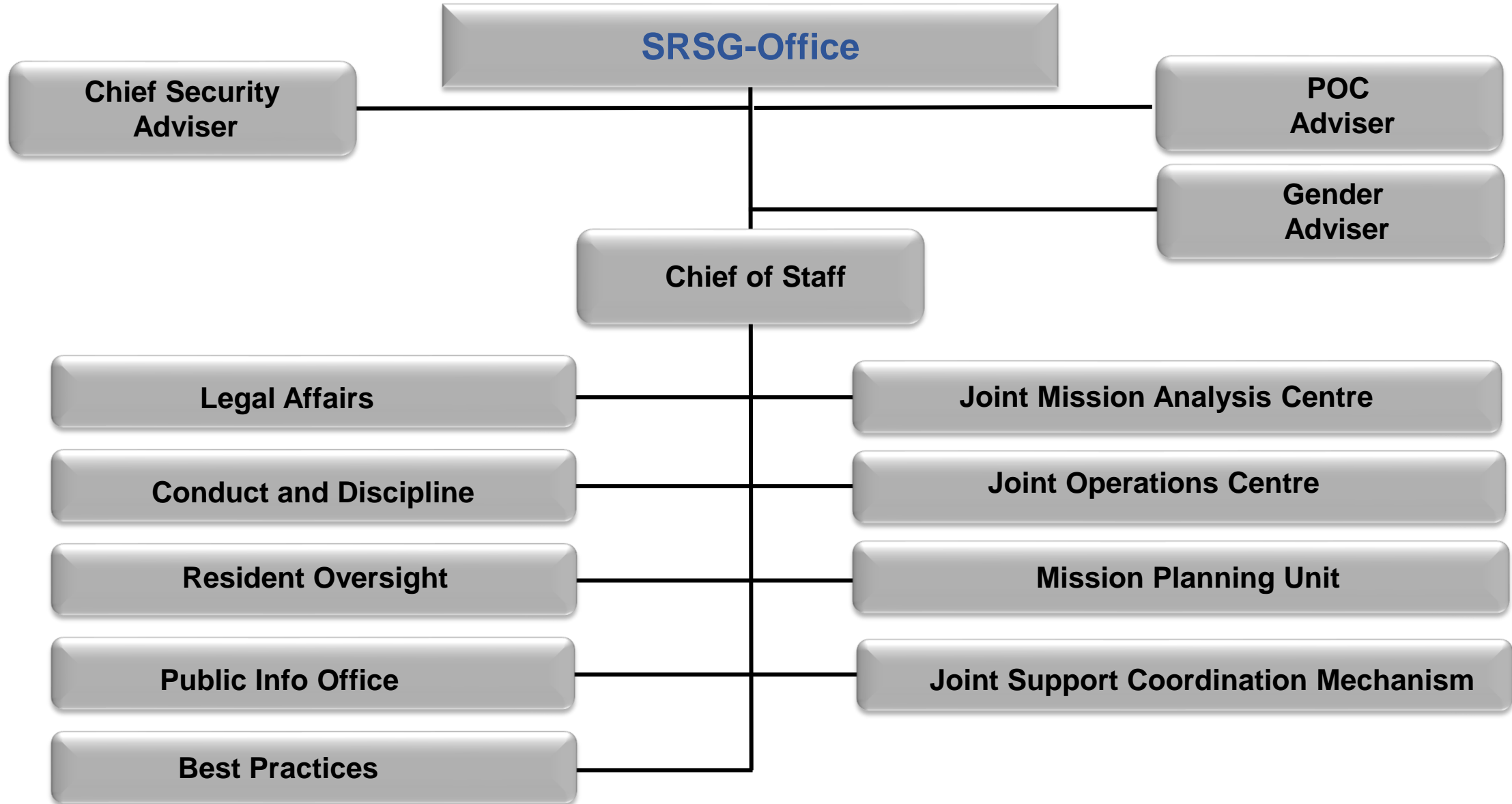
---



- Ensures coherence across all organisational units of the mission in executing the directives of the HOM
- Coordinates and controls structures within mission HQ
- Supports the accomplishment of the HOM's management and control functions
- Implements CPAS, ORMS, and mission-wide coherence of all contingency plans



# The Office of the SRSG







# DSRSG Political



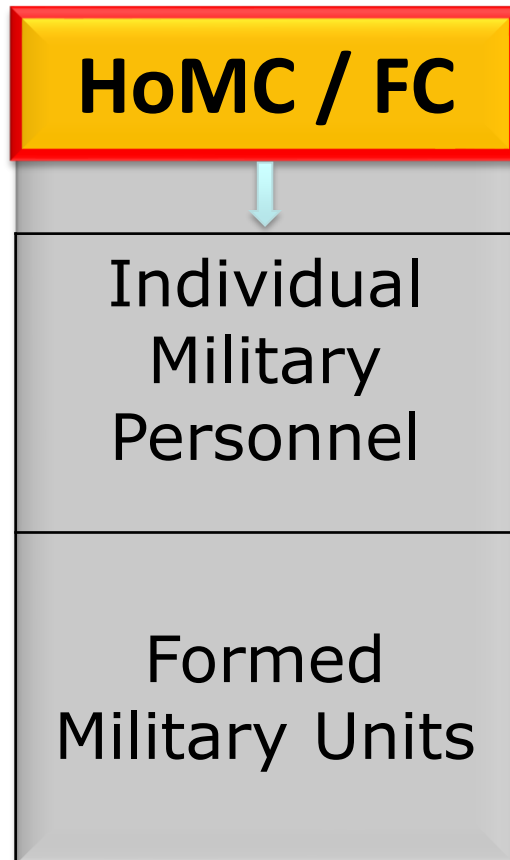
- Designated OIC when SRSG/HOM is away from mission area
- Ensures mission working towards strategic political goals
- May have overall responsibility for a mission component
- May be tasked to manage implementation of mission plan

# DSRSG Humanitarian/Development



- The DSRSG may be appointed as RC or HC
- Leads HCT and coordinates emergency and humanitarian response operations
- RC leads the DCT and coordinates reconstruction and development
- DSRSG/RC/HC is OIC when the two other senior leaders are away from a mission

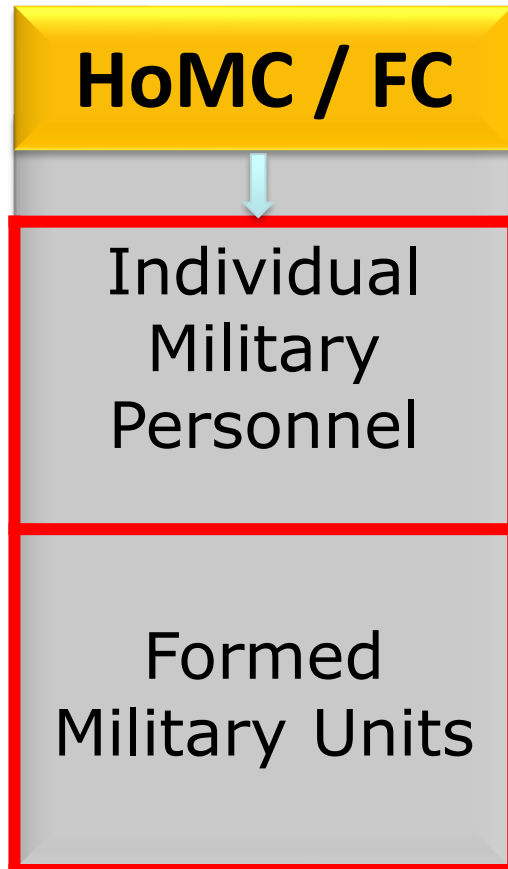
# Head of the Military Component



- Usually a FC, or CMO in missions with only unarmed observers
- Provides leadership and has specified responsibilities for all military personnel and units in the mission:
  - Commands the military component
  - Executes military mandate
  - Supervises military bodies in the peace process
  - Chief interlocutor with warring parties
  - Responsible for discipline and conduct of military personnel



# Military Component



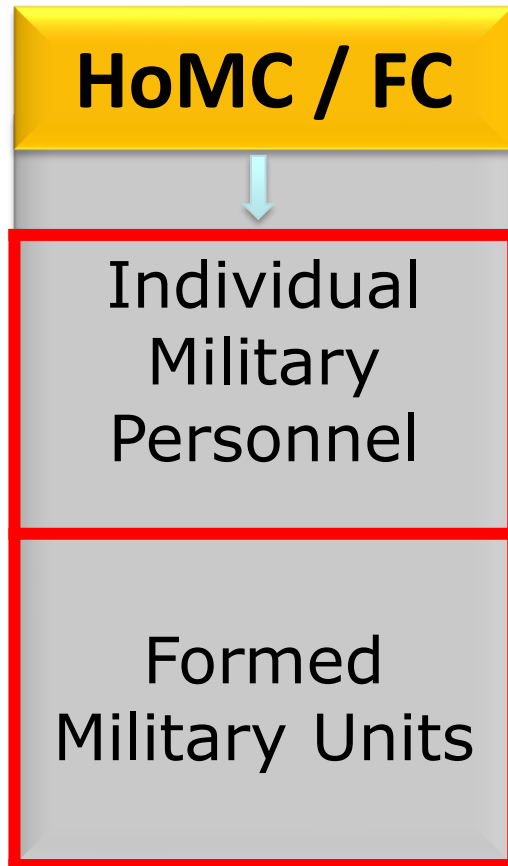
- **Individual personnel**

- Military Staff Officer (MSO)
- Experts on Mission (EOM):
  - United Nations Military Observer (UNMO)
  - Military Liaison Officer (MLO)
  - Military Adviser (MA)

- **Formed units**

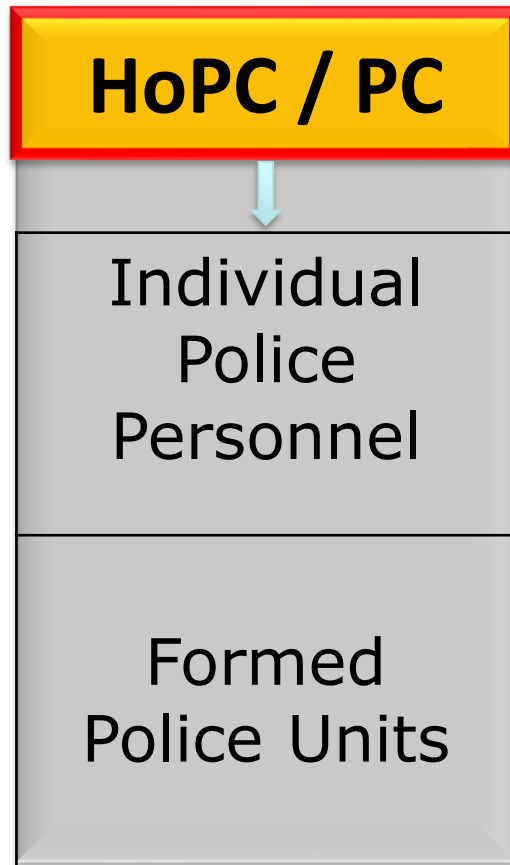
- Infantry, Engineers, Mine clearance, Medical, Logistics, Transport (land, sea, air), Communications, Signals

# Military Component – Major Responsibilities



- Provide a safe and secure environment
- Monitor a disputed border
- Monitor and observe peace processes in post-conflict areas
- Protect civilians
- Assist in-country military personnel with training and support
- Assist ex-combatants in implementing the peace agreements they may have signed

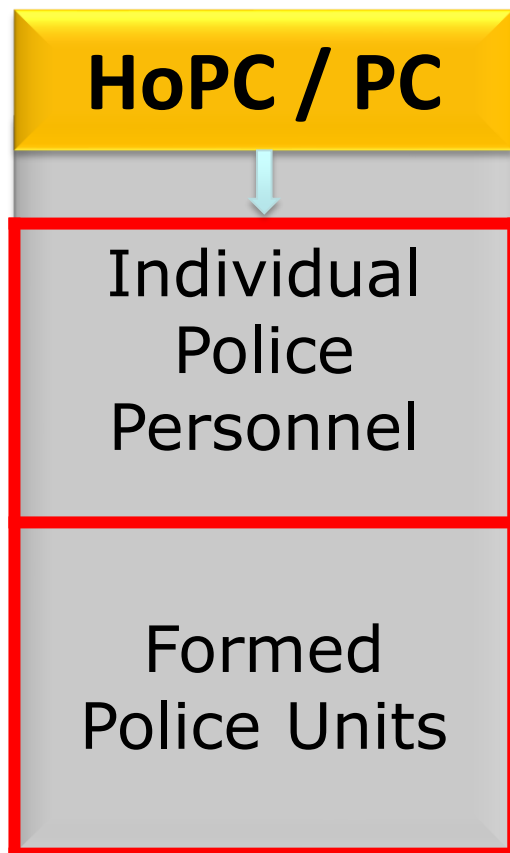
# Head of the Police Component



- Reports to the SRSG/HoM
- Exercises UN operational command, control and provides direction to the police component
- Maintains a technical reporting and communication link with the DPO Police Adviser in UNHQ



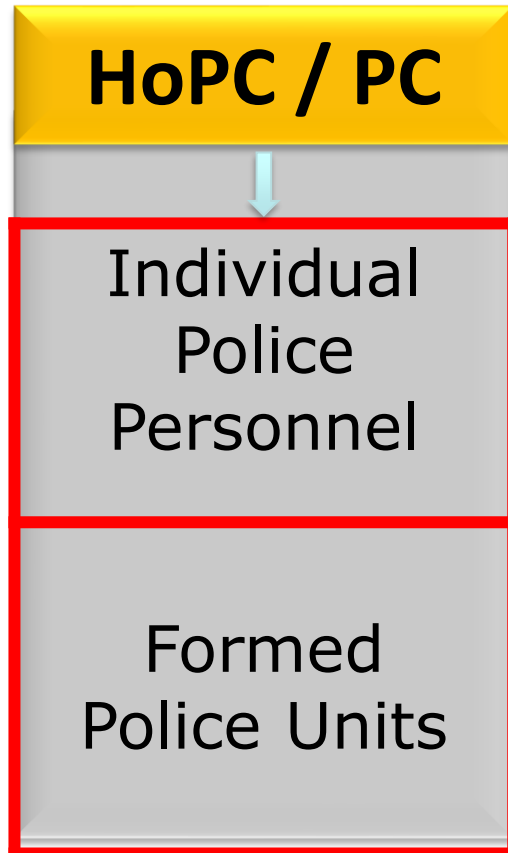
# Police Component



- Individual Police Officer (IPO)
  - Advises, mentors, and trains local law enforcement officials
- Formed Police Unit (FPU)
  - Crowd and riot control



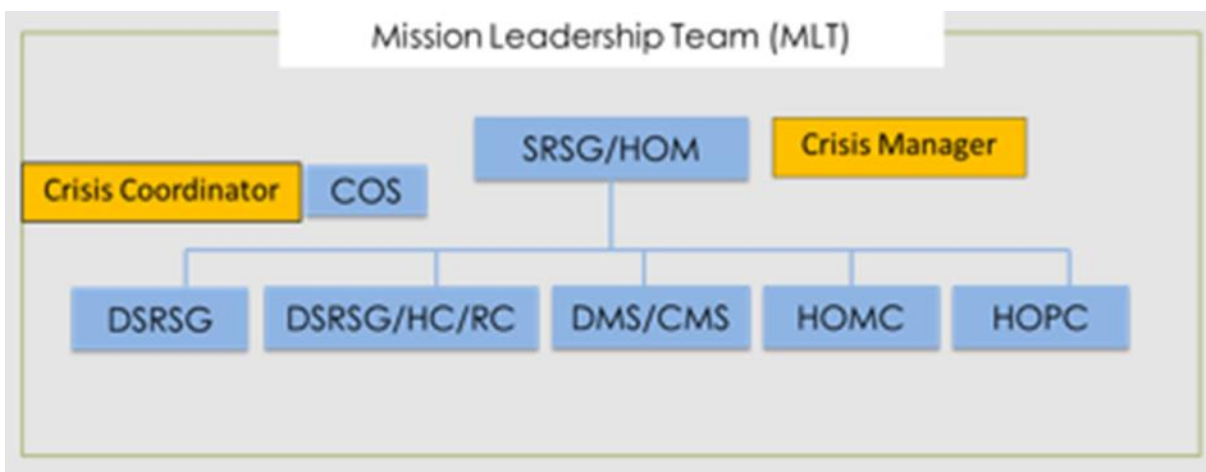
# Police Component – Major Responsibilities



- Advises, mentors and trains local police
- Rebuilds law-and-order capacity
- Maintains public law and order
- Interfaces with all elements
- Partners with civil affairs
- Supports DDR
- Assists in creating a security environment for electoral processes

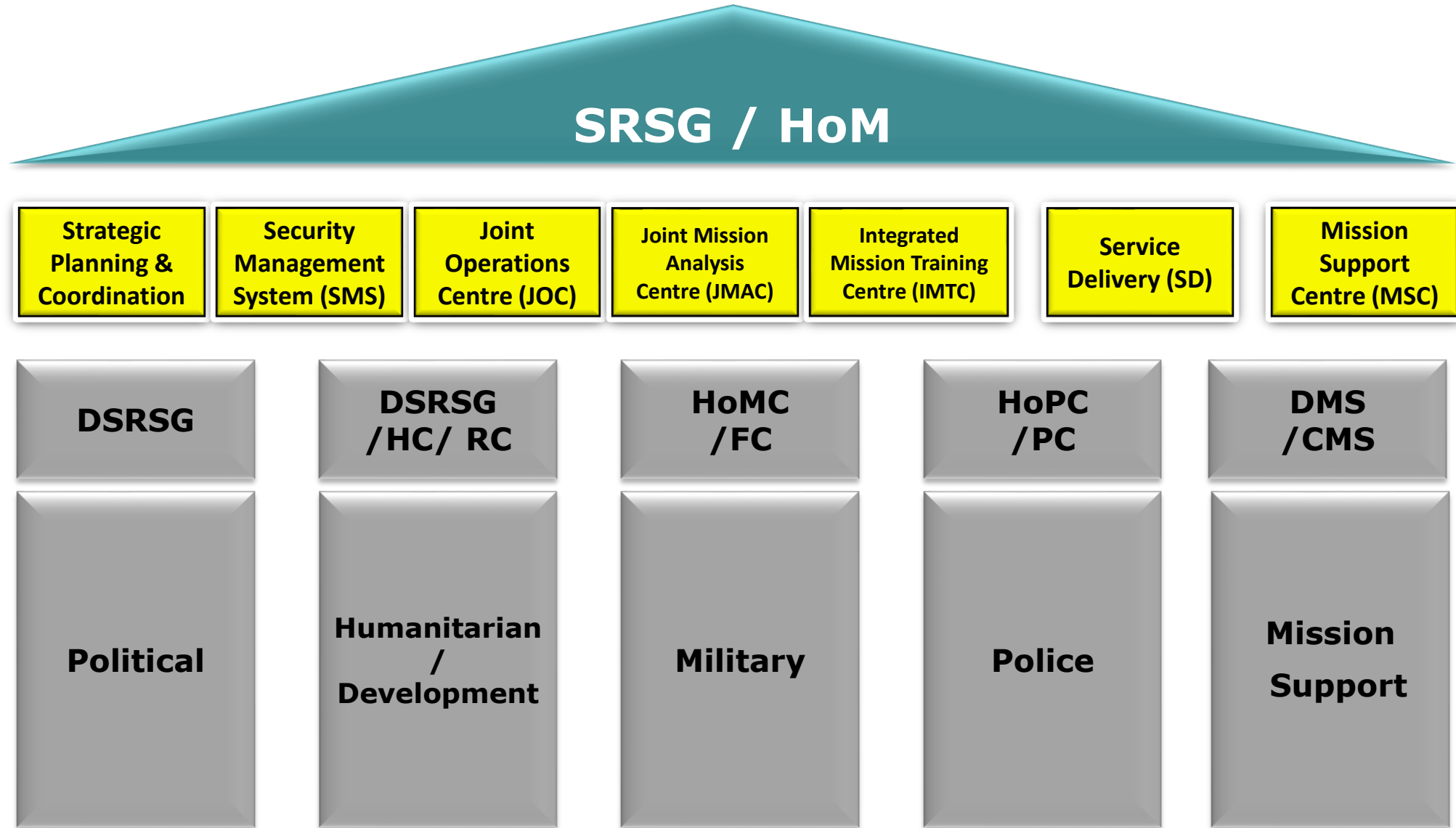


# Mission Leadership Team (MLT)



The MLT facilitates coordination and decision-making and provides direction, oversight and monitoring of sectoral and thematic strategies, or other priorities determined by the mission mandate

# Integrated Mission Elements



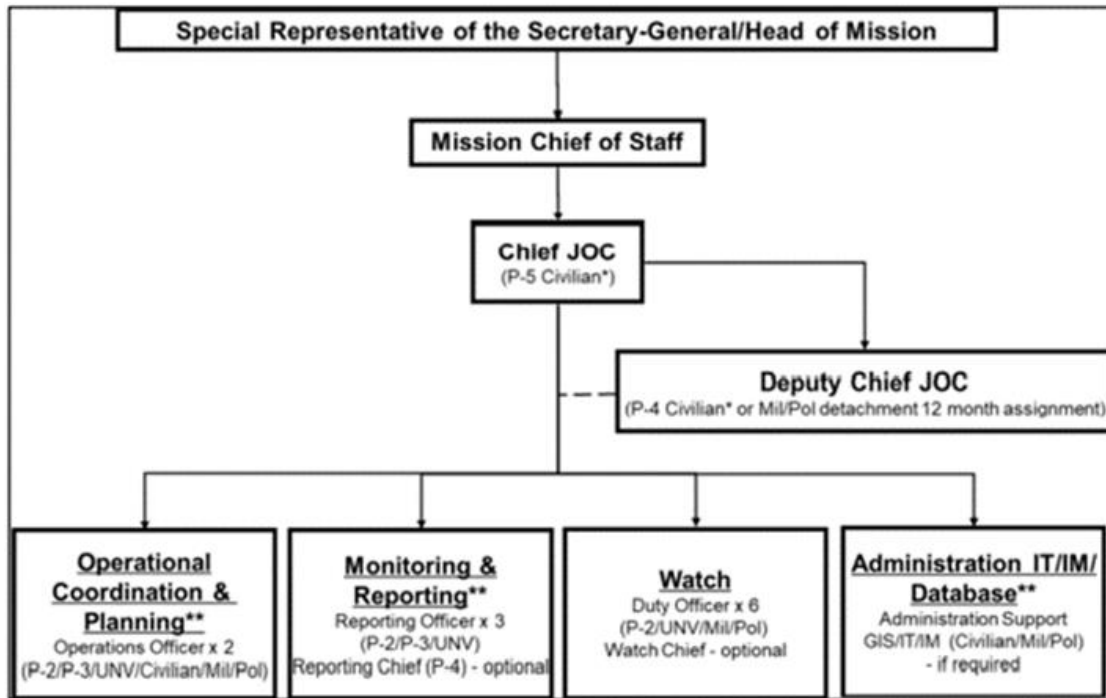
# Integrated Mission Elements



# Joint Operations Centre (JOC)



## General Structure and Functions:

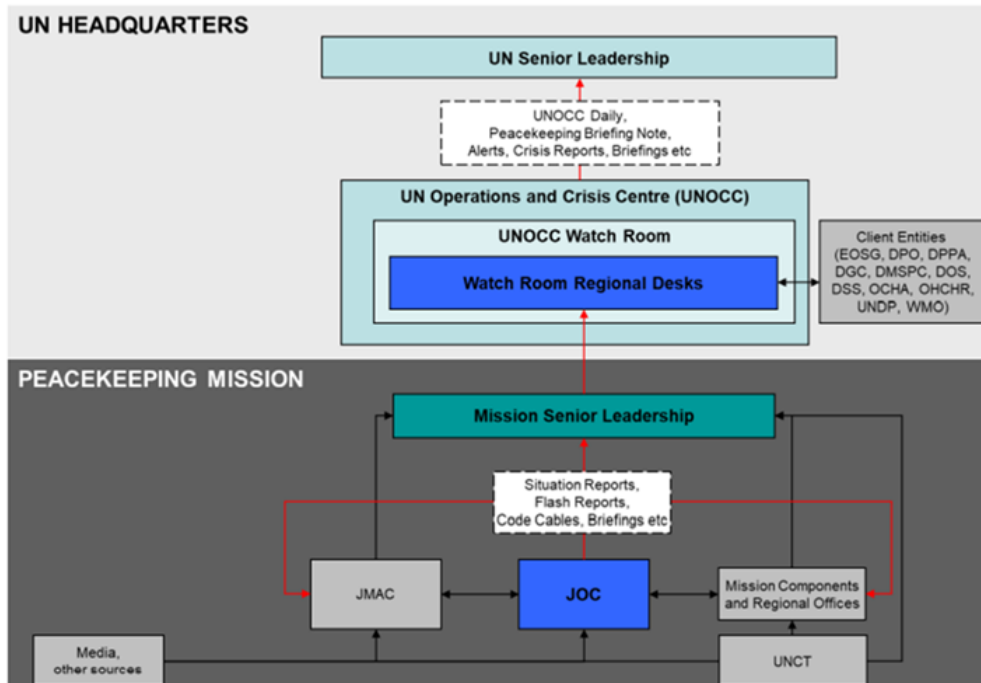


- Provides 24/7 integrated situational awareness
- Facilitates integrated operational coordination and planning
- Supports mission Crisis Management Team

# Joint Operations Centre (JOC)



## Integrated Situational Awareness (SA):

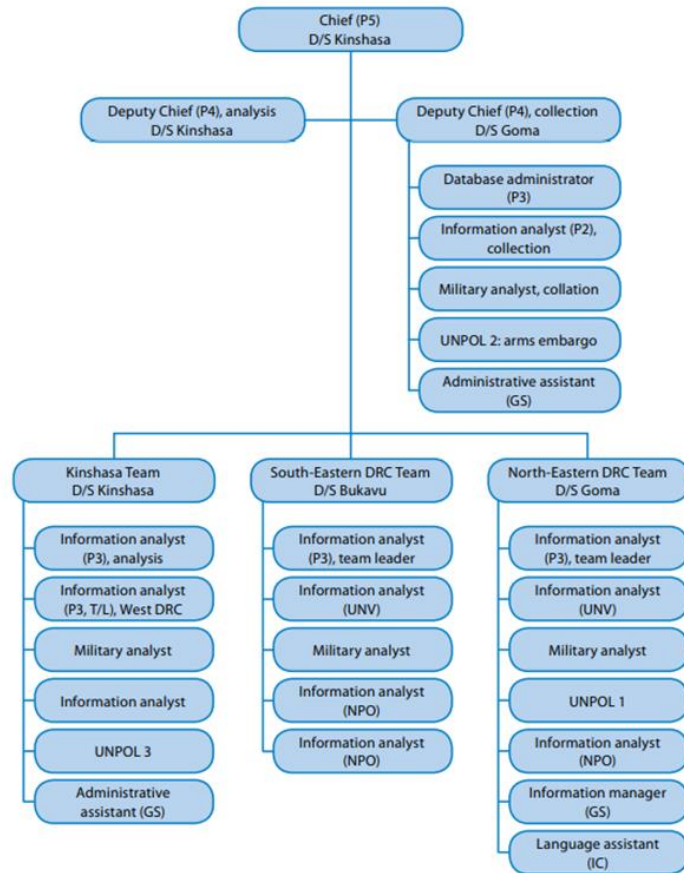


- Monitor the situation in the mission area
- Receive and collate DSR and alerts from all mission components
- Verify and deconflict the information received
- Disseminate daily SA summaries, reports and special incident ('flash') reports to the MLT
- Transmit daily integrated situation report & Flash reports to UNHQ
- Provide regular SA briefings at MLT meetings

# Joint Mission Analysis Centre (JMAC)



Staffing table of JMAC in MONUSCO



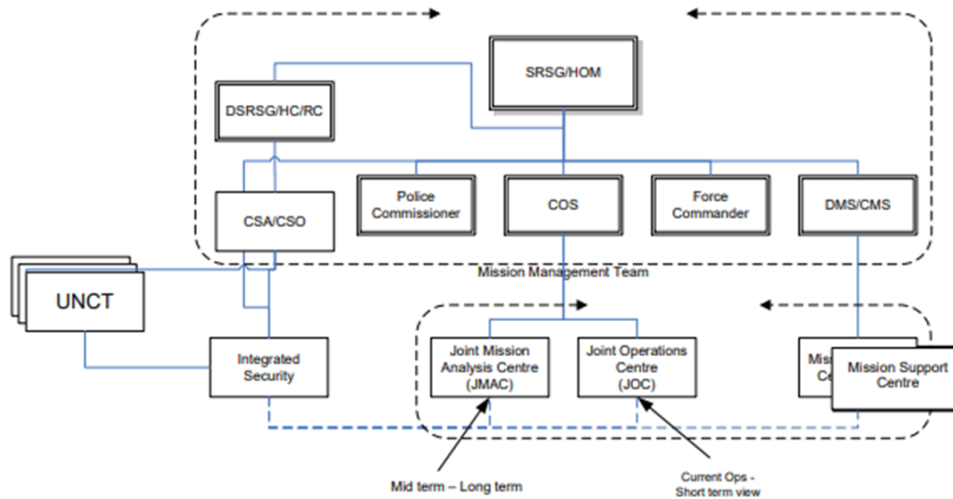
## General Structure and Functions:

- Manages Info requirements from the HoM and MLT to support decision-making
- Prepares integrated analyses and assessments
  - Timely, accurate, and relevant to support decision-making, Op planning; and crisis management
- Identifies threats, challenges and opportunities to mandate implementation



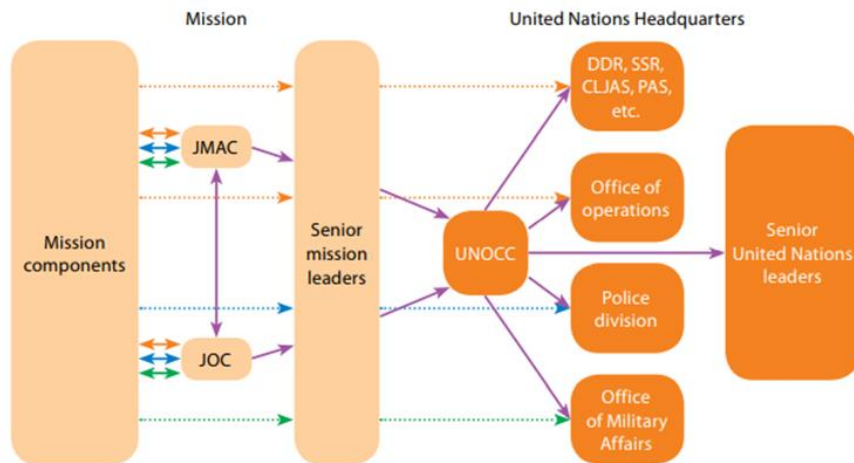


# JOC & JMAC Reporting Line and Functional Relationships at Mission Level



- **JOC & JMAC support the spectrum of SA, understanding and forecasting in PKO:**
  - JOC focus on contributing to knowledge and understanding through monitoring and reporting of current operational activities
  - JMAC focus on enhancing understanding and anticipation through analysis and predictive assessment

# Information Flow from JOC & JMAC to UNOCC/UNHQ



- All mission components are required to provide daily situation reports to JOC
- JOC/JMAC shall maintain a relationship with the UNOCC to inform SA – SRSG's and COS's approval
- Integrated SA products through Unite Aware platform for entering, storing, verifying and validating information

# Mission Support Centre



- Manages the tasking and coordination of all requests for logistics and support on behalf of the DMS/CMS
- Provides all mission components with a single point of coordination for all aspects of logistic support
- DMS/CMS, as delegated by HOM, is responsible for the effective utilization and tasking of enabling assets
- Responsible for mission integration and ensuring coordinated implementation of mission priority tasks and employment of resources

# Mission Planning Unit



- 
- Initiates, organizes and leads mission-wide planning processes
  - Develops, coordinates, and implements a Mission Plan
  - Guides mandate implementation and mission-wide direction set by the HOM
  - Develops and coordinates the results-based budget
  - Implements the Comprehensive Performance Assessment System (CPAS)

# UN Humanitarian Civil-Military Coordination (UN-CMCoord) Mechanism

---



Humanitarian agencies and organisations establish and execute independent and distinct humanitarian operations

UN-CMCoord:

- Supports an Integrated civil-military mechanism to coordinate activities in mission area
- Facilitates information sharing, mutual support, joint assessments, integrated planning, and common strategies during crisis

# Other Integrated Structures



Depending on the mission or its mandate, there may be various additional integrated structures like:

- Integrated Mission Training Centre (IMTC)
- Strategic Planning and Coordination Cell (SPCC)
- Service Delivery Division (SDD)
- Security Information and Operations Centre (SIOC)
- Security Information Coordination Unit (SICU)
- Joint Logistics Operation Centre (JLOC)

# Summary of Key Messages



- The HOM/SRSG has overall authority over all UN personnel in the mission area
- The HOMC and the HOPC exercise operational control over all military and police personnel assigned to their components, in the mission area
- The DMS/CMS is responsible for the provision of administrative and logistic support to all components and for the effective utilization and tasking of enabling assets
- JOC & JMAC support the spectrum of Situational Awareness, understanding and forecasting in PKO



# Learning Activity



Group discussion

Total Time: 15 mins

Preparation: 10 min

Discussion: 5 min

- What are the main Integrated Mission Elements in a multi-dimensional PK Mission?
- Briefly explain the main responsibilities of the MLT, JOC and JMAC.